

Mental Health and Addictions Nursing (MHAN) Program

In collaboration with the district school boards, the Mental Health and Addictions Nurses will support children, youth and their families who are facing mental health and addiction issues.

Key Responsibilities of the Mental Health and Addictions Nursing (MHAN) Team

The Mental Health and Addiction Nursing (MHAN) Program is a dedicated team of mental health nurses providing a variety of services to students and their families in collaboration with their district school board team. We support students who are discharged from hospital with their successful transition back into school and their community.

This program is a joint tri-ministerial initiative supported by your district school board (DSB).

Across the Central East region we are partnered with Durham DSB, Durham Catholic DSB, Kawartha Pine Ridge DSB, and Peterborough Victoria Northumberland Clarington Catholic DSB.

Through our partnership and collaboration with your district school board team, our hope is to provide students and their families with the integrated services they need to support each student's mental health and addiction concerns.

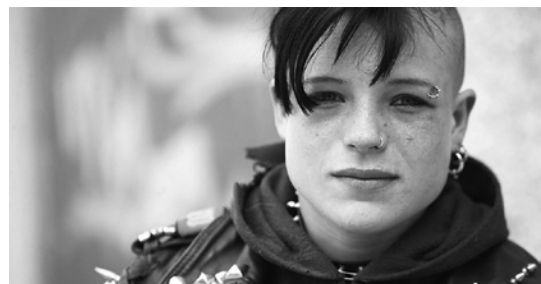
Referral to the MHAN program is completed through your district school board. Available services are determined according to eligibility.

Through our strengths-based, recovery focused approach, the (MHAN) team encompasses compassion, integrity and caring in all that we do.

Child and Youth Strategy Key Priorities

The following priorities have been identified by the Ministry of Health, the Ministry of Education, and the Ministry of Children and Youth Services:

- Providing children, youth and families with fast access to high quality services;
- Identifying and intervening in child and youth mental health and addictions issues early;
- Closing critical service gaps for vulnerable children and youth at key transition points, and those in remote communities.



Child and Adolescent Mental Health and Addictions Important Facts

- 70 per cent of mental health problems and illnesses begin during childhood or adolescence
- In Canada, it is estimated that between 14 and 25 per cent of children and youth suffer from at least one diagnosable mental health disorder or substance use issues. The vast majority, however, are undiagnosed
- Approximately 25 per cent of students with a psychiatric disorder drop out of school, accounting for 14.2 per cent of all high school drop-outs; leading to approximately 40 per cent more missed school days
- Ontario school boards indicate that educators rank mental health and substance abuse issues as critical issue for school systems
- 15 to 21 per cent of Ontario's children and youth have at least one mental health disorder, however very few seek services for their mental health problems
- Suicide is the second leading cause of death, after accidents, among 15- to 19-year-olds – 24 per cent of all deaths (Statistics Canada, 2000–2004)
- In 2011, Ontario youth between grades 7 to 12: 22 per cent have used cannabis, 55 per cent have used alcohol, and 17 per cent used at least one prescription drug non-medically in the past year (168,800 youth)
- Two-thirds of youth with substance use issues have a co-occurring mental health problem, 20 to 70 per cent of youth with mental health disorder have a co-occurring substance use problem



Your Mental Health and Addictions Nurse

is _____

at _____

In an emergency or crisis situation call:

Durham Crisis Line: 1-800-742-1890

Four County Crisis Line

for Peterborough and Surrounding Areas:
1-866-995-9933

Kids Help Phone: 1-800-668-6868

You may also call your local police, the emergency department at your local hospital or 911.

Hours of Service

Monday to Friday - 8:30am to 4:30pm

Services will be closed on weekends and statutory holidays.

For more information contact:

Home and Community Care Support Services Central East

Whitby Branch

920 Champlain Court

Whitby ON L1N 6K9

905-430-3308 or 1-800-263-3877

TTY Line: 877-743-7939

Our community partners include:



Peterborough Victoria
Northumberland and Clarington
Catholic District School Board

[www.healthcareathome.ca/
centraleast](http://www.healthcareathome.ca/centraleast)
www.centraleasthealthline.ca