

# **Home and Community Care FRAIL SENIORS BY SUB-REGION**

NOVEMBER 2021

# Method

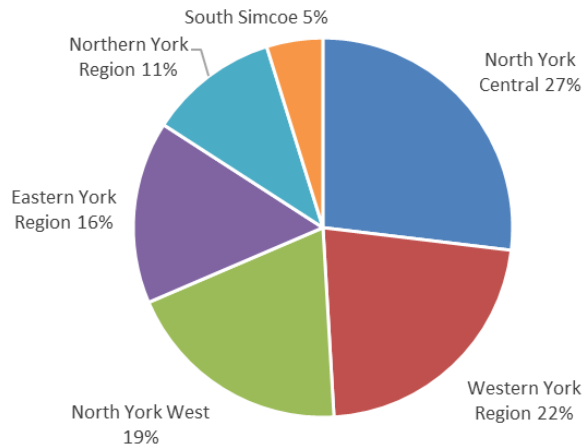
- Data Source
  - Integrated Data Stores (IDS)
    - Client Health and Related Information Systems (CHRIS)
    - AcuteNet (interRAI-HC Assessment Data)
    - Data accessed November 16, 2021
- General Inclusion Criteria
  - Patients with an active home and community care referral as of November 16, 2021 with an interRAI-HC assessment (all referral service types included)
  - Most recent interRAI-HC assessment
- Exclusion Criteria
  - Patients residing in a long-term care (LTC) facility

# Method (continued)

- Defining Frailty in Seniors\*
  - Seniors aged 65+ years as of November 16, 2021
  - Seniors with complex chronic conditions:
    - Has one or more of the following conditions – COPD, asthma, emphysema, CHF, stroke, psychiatric (anxiety/bipolar disorder/depression/schizophrenia), cancer diagnosis
    - CHESS Score  $\geq 2$
    - Experienced a functional decline in the 90 days prior to their assessment

*\*Note: This definition was adapted from ICES' technical definition of frailty. It should be noted that the definition varies slightly from the ICES' definition criteria used to identify 'seniors with complex chronic conditions'*

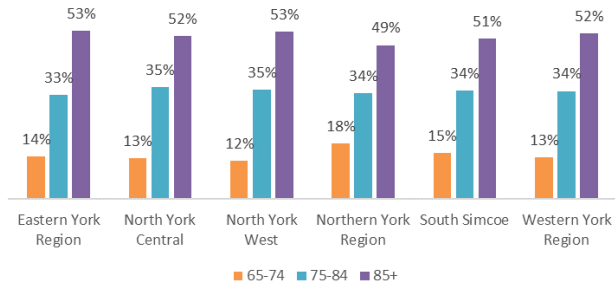
# Active Home and Community Care Patients % Frail Seniors by Sub-Region



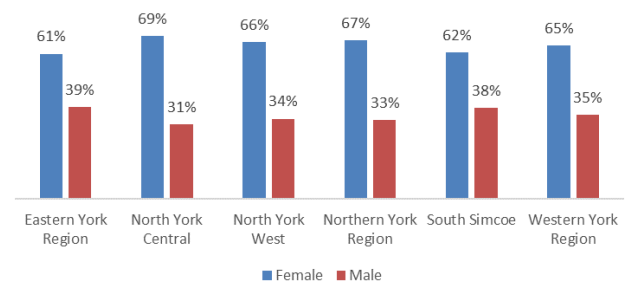
- An estimated 5,400 (27%) of active long-stay, **home and community care seniors** met the **frailty** criteria
- Almost 7 out of 10 reside in North York Central, Western York Region and North York West sub-regions

# Long-Stay Home and Community Care Frail Seniors Age and Gender Distribution

Frail Home and Community Care Seniors  
by Age and Sub-Region



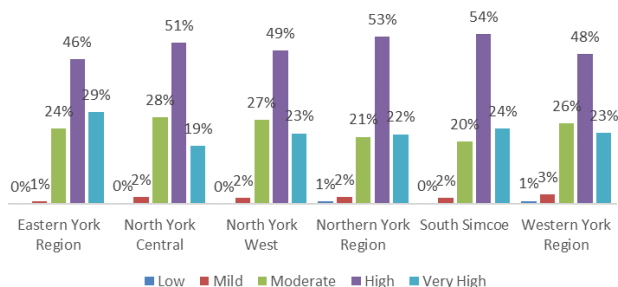
Frail Home and Community Care Seniors  
by Gender and Sub-Region



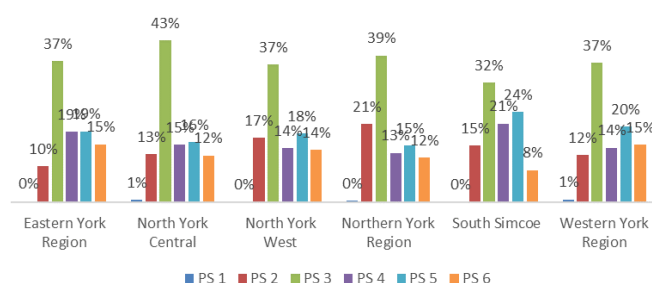
- Each of the sub-regions had a relatively high percentage (49-53%) of frail seniors aged 85+
- Ratio of females to males is ~2:1 in all sub-regions

# Long-Stay Home and Community Care Frail Seniors MAPLe and Personal Support Care Groups

Frail Home and Community Care Seniors  
by MAPLe Score by Sub-Region



Frail Home and Community Care Seniors  
by Personal Support Care Group by Sub-Region



- Based on the MAPLe score, a higher proportion of frail seniors in the South Simcoe sub-region are at high or very high-risk of long-term care institutionalization compared to the other sub-regions
- Personal Support Care Group score indicates that majority of these seniors (>85%) are eligible for personal support services

# Summary

- Approximately 1 in 4 Home and Community Care seniors are classified as frail
  - Large proportion of frail seniors are 85+ years
- Females out-number males in all sub-regions by a ratio of ~2:1
- ~69% reside in 3 sub-regions (North York Central, North York West, and Western York Region)
  - These 3 sub-regions have the highest percentage of long-stay home and community care senior patients across the geography of Home and Community Support Services Central.
- Based on the MAPLe score, a relatively higher proportion of frail seniors in the South Simcoe sub-region are at high to very high risk of long-term care institutionalization
- Based on the Personal Support Care Group, >85% of frail seniors are eligible for Personal Support services